

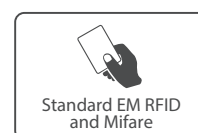
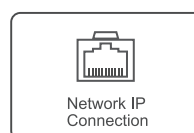
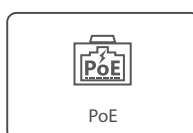
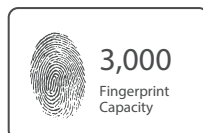
C2 Slim

Outdoor Standalone
Access Control Terminal



IP65 Access Control Device

C2 Slim is the most compact access control device controller which suitable for installing on door frame. It is combined with biometric fingerprint and RFID Card for higher security requirement. Management with master cards, can register or delete users under offline state. The PoE TCP/IP communication will provide more convenient for your project.



BioNANO - The core algorithm

BioNano is applied in all Anviz biometric-based products used for identification.



- Independent research and development
 - Suitable for both wet and dry fingers
 - Automatically heals the broken lines in fingerprint images
 - Extraction of features in worn fingerprints
- Fingerprint template auto update

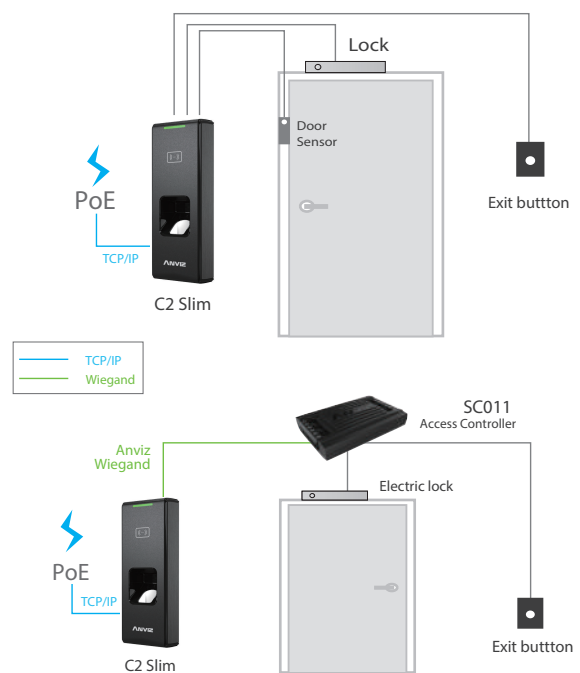
Technical Specifications

Capacity	Fingerprint Capacity	3,000
	Card Capacity	3,000
	Log Capacity	50,000
Interface	Comm.	TCP/IP, RS485
	Relay	1 Relay Output
	I/O	Wiegand Out&In, Door Sensor, Exit Button
Feature	Identification Mode	FP, Card
	Identification Time	<0.5 s
	Webserver	Support
Hardware	CPU	Industrial High Speed CPU
	Tamper Alarm	Support
	Sensor	Fingerprint Touch activation
	Scan area	22mm*18mm
	RFID Card	Standard EM & Mifare RFID Card
	Size (W * H * D)	50 x 159 x 25mm
	Temperature	-30 °C ~ 60 °C
	Operating Voltage	DC 12V

Features

- ▶ Small size with compact design
- ▶ Easy installation
- ▶ New generation sensor – hermetic, waterproof and dustproof
- ▶ BioNANO core fingerprint algorithm: High Performance and Reliability
- ▶ Easy user enrollment on the unit via Master Card or in the management software
- ▶ Identification mode: Fingerprint, Card, Fingerprint + Card
- ▶ Compatible with industrial standard RFID EM & Mifare
- ▶ Communicate with computer via PoE-TCP/IP and RS485
- ▶ Directly connect to lock control and door open sensor as a standalone access controller
- ▶ Standard Wiegand26 output
- ▶ Optional waterproof cover for outdoor solution
- ▶ Various communications(TCP/IP, RS485) are appropriate for multiple network deployment

Network Topology Illustration



CrossChex
Time Attendance and Access Control
Management System



Employee
Unify Employee management



Device
Quick Add, Easy Setting



Shift
Manual and intelligent
shift schedule



Export
Flexible and Practical
Report output

ANVIZ® Intelligent Security

For more information, visit www.anviz.com, or email us sales@anviz.com.

2018© Anviz Global. All Rights Reserved. Due to the consistent improving of the product, this specification and appearance is subject to change without notice.